

FED. ROAD DIST. NO.	STATE	PROJ. NO.	FISCAL YEAR	SHEET NO.	TOTAL SHEETS
	OKLA.				

DESCRIPTION	REVISIONS	DATE

SECTION CORNER - O.D.O.T. D-22-508  
 SET A #4 BAR WITH "CA 2054" CAP FOR CORNER.  
 LOCATION WAS RE-ESTABLISHED BY USING EXISTING HIGHWAY PLANS AND SPLITTING FENCES RUNNING EAST WEST. ALSO FOUND A #4 BAR WITH "CA 980" CAP REFERENCED IN OKLAHOMA CERTIFIED CORNER RECORDS FILED IN 2004 BUT DID NOT ACCEPT THIS LOCATION BECAUSE IT DID NOT FIT EXISTING HIGHWAY PLANS.

SECTION CORNER - O.D.O.T. D-22-509  
 FOUND AND ACCEPTED A 60D NAIL IN THE TOP CENTER OF AN 8" FENCE CORNER POST. LOCATION IS IN AGREEMENT WITH EXISTING INTERSECTION OF FENCE LINES. ALSO FOUND A #4 BAR WITH "1737 OK" CAP REFERENCED IN OKLAHOMA CERTIFIED CORNER RECORDS FILED IN 2010 BUT DID NOT ACCEPT THIS LOCATION BECAUSE THE METHOD IN WHICH IT WAS SET AND IT DID NOT FIT SURROUNDING IMPROVEMENTS.

SECTION CORNER - O.D.O.T. D-22-510  
 SET A #4 BAR WITH "CA 2054" CAP FOR CORNER.  
 LOCATION WAS RE-ESTABLISHED BY SPLITTING FENCES RUNNING NORTH SOUTH. ALSO FOUND A #4 BAR WITH "PLS 1587" CAP BUT DID NOT ACCEPT THIS LOCATION BECAUSE IT DID NOT FIT SURROUNDING IMPROVEMENTS. NO OKLAHOMA CERTIFIED CORNER RECORDS WAS ON FILE FOR THIS LOCATION.

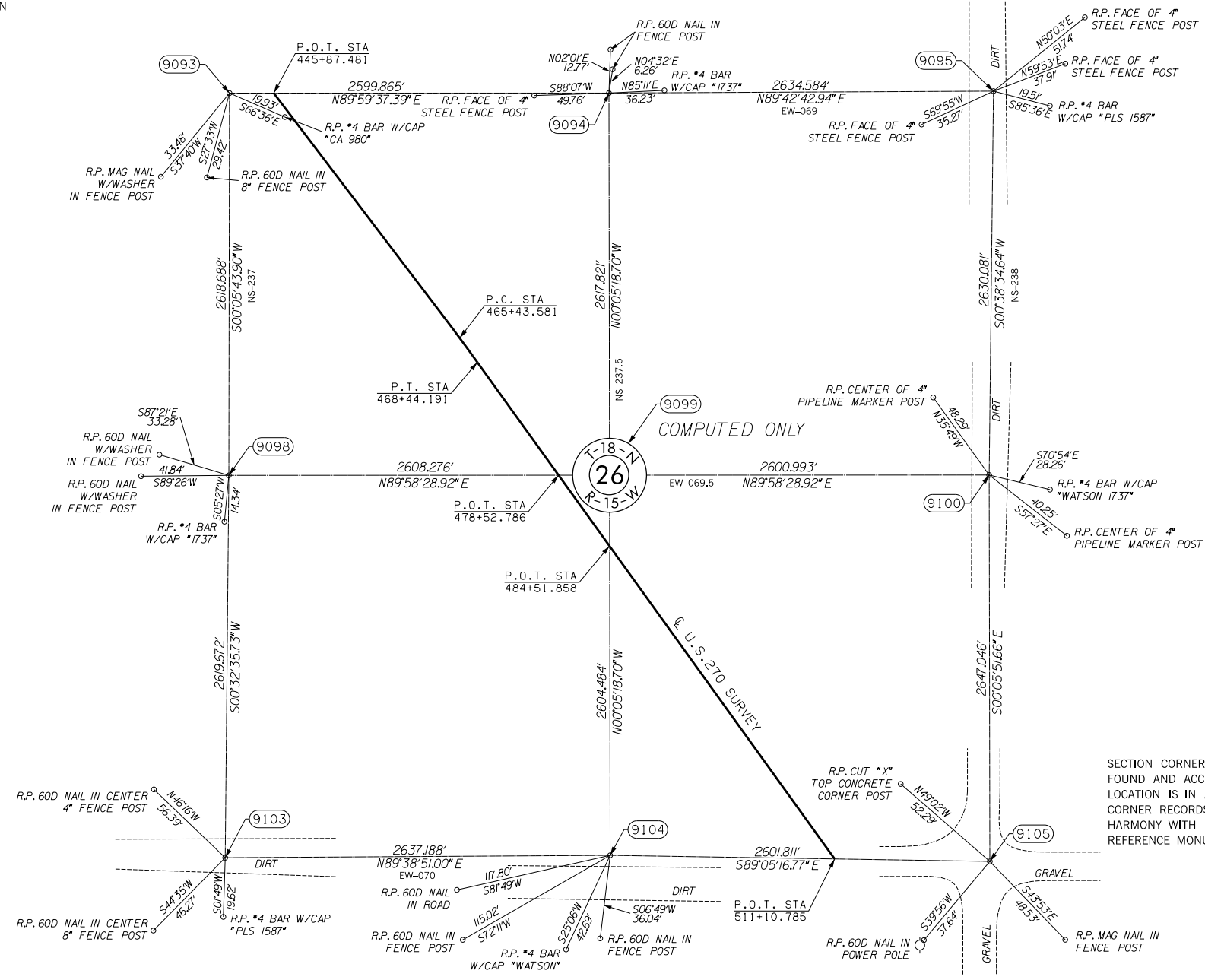
SECTION CORNER - O.D.O.T. D-22-512  
 SET A #4 BAR WITH "CA 2054" CAP FOR CORNER.  
 LOCATION WAS RE-ESTABLISHED USING A FENCE LINE RUNNING EAST WEST. ALSO FOUND A #4 BAR WITH "1737 OK" CAP REFERENCED IN OKLAHOMA CERTIFIED CORNER RECORDS FILED IN 2010 BUT DID NOT ACCEPT THIS LOCATION BECAUSE THE METHOD IN WHICH IT WAS SET AND IT DID NOT FIT SURROUNDING IMPROVEMENTS.

SECTION CORNER - O.D.O.T. D-22-513  
 FOUND AND ACCEPTED A 60D NAIL. LOCATION IS IN AGREEMENT WITH EXISTING IMPROVEMENTS. ALSO FOUND A #4 BAR WITH "1737 OK" CAP REFERENCED IN OKLAHOMA CERTIFIED CORNER RECORDS FILED IN 2010 BUT DID NOT ACCEPT THIS LOCATION BECAUSE THE METHOD IN WHICH IT WAS SET AND IT DID NOT FIT SURROUNDING IMPROVEMENTS.

SECTION CORNER - O.D.O.T. D-22-399  
 FOUND AND ACCEPTED A #4 BAR WITH "PLS 1444" CAP. LOCATION IS IN AGREEMENT WITH OKLAHOMA CERTIFIED CORNER RECORDS FILED IN 2010 AND 2004 AND IS IN HARMONY WITH EXISTING IMPROVEMENTS. THE REFERENCE MONUMENTS WERE FOUND AND VERIFIED.

SECTION CORNER - O.D.O.T. D-22-516  
 SET A #4 BAR WITH "CA 2054" CAP FOR CORNER.  
 LOCATION WAS RE-ESTABLISHED BY SPLITTING FENCE LINES RUNNING EAST WEST. ALSO FOUND A #4 BAR WITH A "PLS 1587" CAP BUT DID NOT ACCEPT THIS LOCATION BECAUSE IT DID NOT FIT SURROUNDING IMPROVEMENTS. NO OKLAHOMA CERTIFIED CORNER RECORDS WAS ON FILE FOR THIS LOCATION.

SECTION CORNER - O.D.O.T. D-22-517  
 SET A #4 BAR WITH "CA 2054" CAP FOR CORNER.  
 LOCATION WAS RE-ESTABLISHED BY SPLITTING FENCE LINES RUNNING EAST WEST AND IN LINE WITH FENCE LINE RUNNING NORTH. ALSO FOUND A #4 BAR WITH "PLS JF WATSON" CAP REFERENCED IN OKLAHOMA CERTIFIED CORNER RECORDS FILED IN 2010 BUT DID NOT ACCEPT LOCATION BECAUSE OF THE METHOD IN WHICH IT WAS SET AND IT DID NOT FIT SURROUNDING IMPROVEMENTS.



SCALE:  
 1" = 500'

NOTE: REFERENCE'S SHOWN ARE NOT TO SCALE.

OKLAHOMA DEPARTMENT OF TRANSPORTATION SURVEY DIVISION	
PLS	KH
DRAWN	CF,SK
CHECKED	KH
APPROVED	KH
CREW	JH,SA,BH,DR

**SURVEY DATA SHEET**

SWO 4600 (1) PROJECT NO. 17671(34) SHEET NO. 540